

Reading Meters – A practical guide

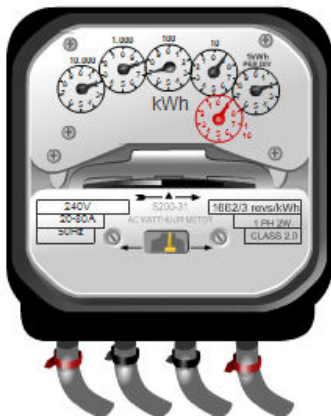
Regular meter readings, typically on a monthly basis, should be taken as these will be required by your Energy Assessor to produce the Display Energy Certificate (DEC). Meter readings should, where ever possible be taken on the same date each month for both gas and electricity, it is important that all utility meter readings are taken on the same date.

Electricity

There are three types of electricity meter in common use today, analogue meters with a rotating disc and numbers or dials to display the reading and digital meters. Each site may have more than one meter and more than one type of meter.



Typical analogue style meter, in this particular case the reading would be 28792, the red digits can be ignored as they are fractions of a kWh



Alternatively the meter may look like this, in this particular case the reading would be 28792, the red dial can be ignored as this is 1/10th of a kWh



A digital electricity meter would typically look like this, in this particular case the reading would be 29386, and the reading can be read straight from the screen. Be careful to read the correct screen as your meter may scroll through total, peak and offpeak readings as well as displaying 88888 as a screen test.

With all types of electricity meter always ensure that you understand and record the display format for your reading as it could be displayed in either kWh (kilo-watt hours) or MWh (mega-watt hours)