

# How to join CIBSE YEN



A step-by-step guide to joining the CIBSE Young Engineers Network

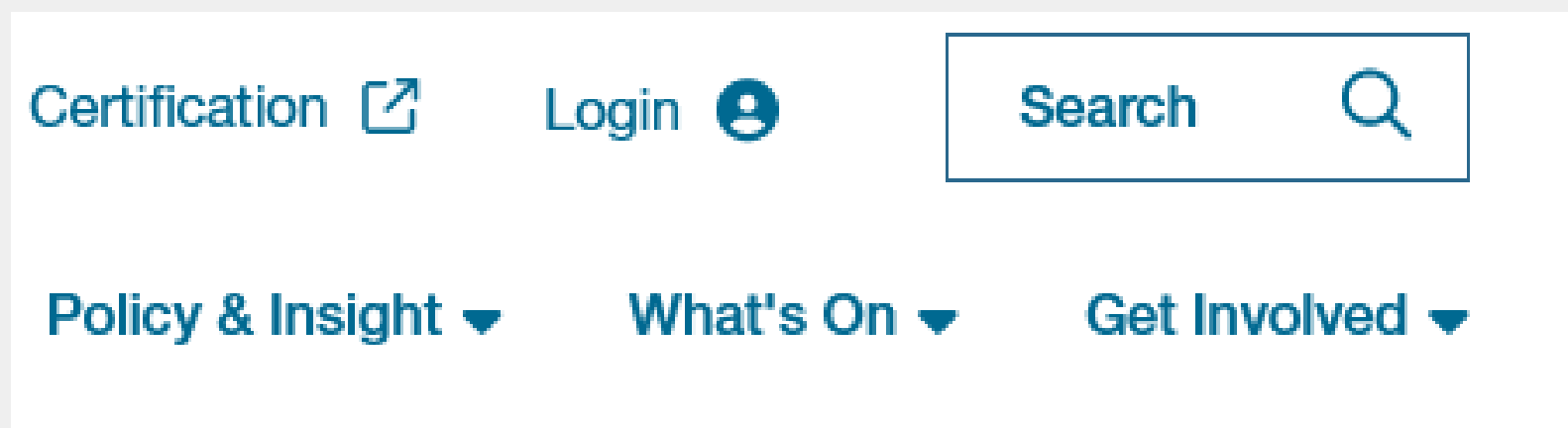




# Access or create your account

---

- 01** Log into your MyCIBSE account via [cibse.org](https://cibse.org) and click Login in the top right corner, near the search bar. You can also create an account via this route.



Contact [membership@cibse.org](mailto:membership@cibse.org) for assistance accessing your account.

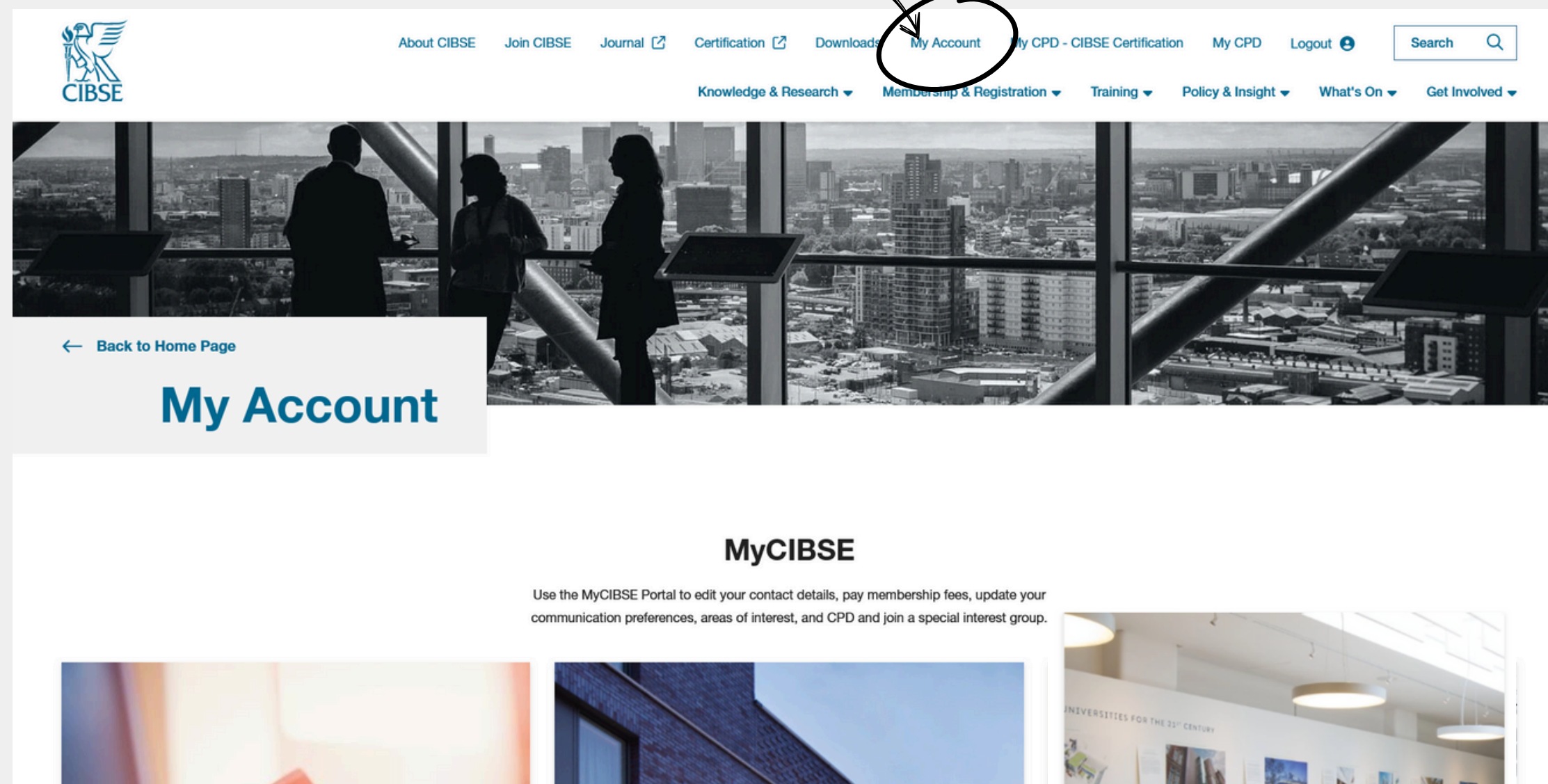




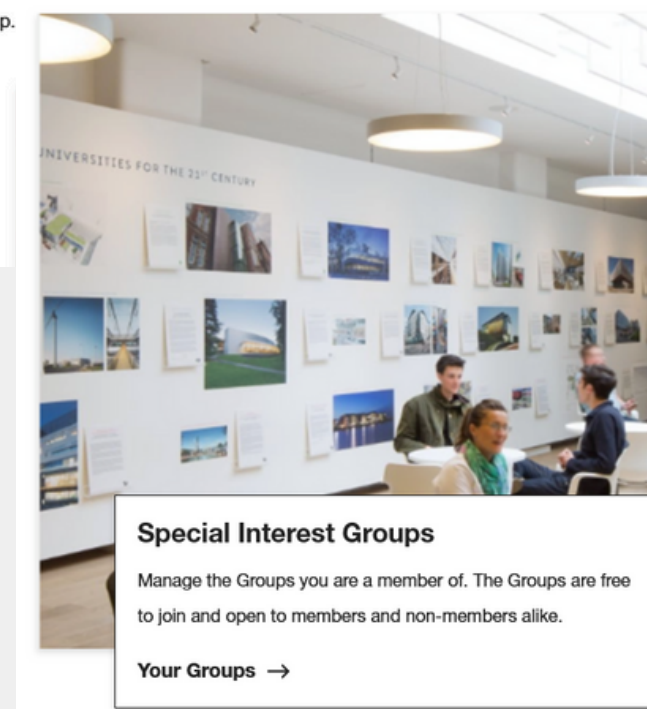
**01** Select 'My Account' from the top menu

# Find your account settings

To update your groups you need to find the "My Account" page.



**02** Scroll down the page to find Special Interest Groups





# Tick to join the Network

01

- IT and Controls Group
- Lifts Group
- Natural Ventilation Group
- Resilient Cities Group
- School Design Group
- Sustainability Interest Group
- Women in Building Services Engineering Network
- Young Engineers Network

02

Submit

03

MY PREFERENCES

01

Tick the box next to “Young Engineers Network”

02

Scroll down and click “Submit”

03

Click on “My Preferences” at the top of the page





# Check your preferences

Click on “My Preferences” at the top of the page.

This is to ensure you receive communication about upcoming events and messages from the committee.

**Communication Methods**

- Email
- Post
- Phone
- SMS

**Communication Preferences**

- CIBSE ENewsletter ⓘ
- CIBSE Journal ENewsletter and webinars ⓘ
- Your region
- Society of Digital Engineering
- Society of Façade Engineering
- Society of Light & Lighting
- Your Groups & Networks ⓘ
- Society of Public Health Engineers
- Institute of Local Exhaust Ventilation Engineers
- National events ⓘ
- Awards ⓘ
- Membership upgrades and offers
- Training ⓘ
- Certification
- Jobs ⓘ
- Additional CIBSE and CIBSE Services Ltd services and products ⓘ
- Journal and Event Partners ⓘ

**01** Ensure that “Email” is ticked

**02** Ensure that “Your Groups & Networks” is ticked

**03** Submit your preferences

Submit





# Need any assistance?

---

Email [yen@cibse.org](mailto:yen@cibse.org)

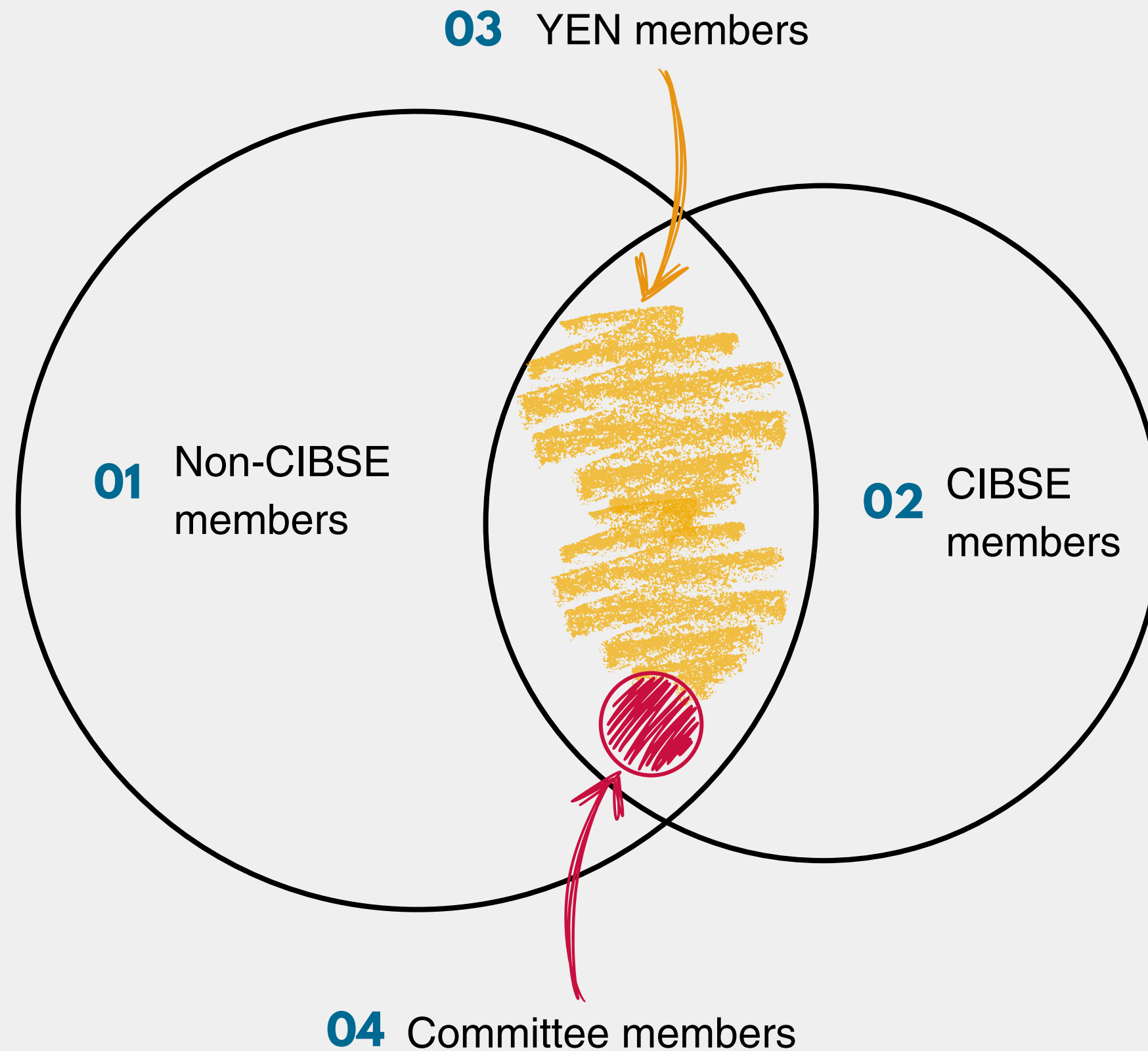
Keep reading to find out how you can contribute to the committees.





# Defining YEN Membership

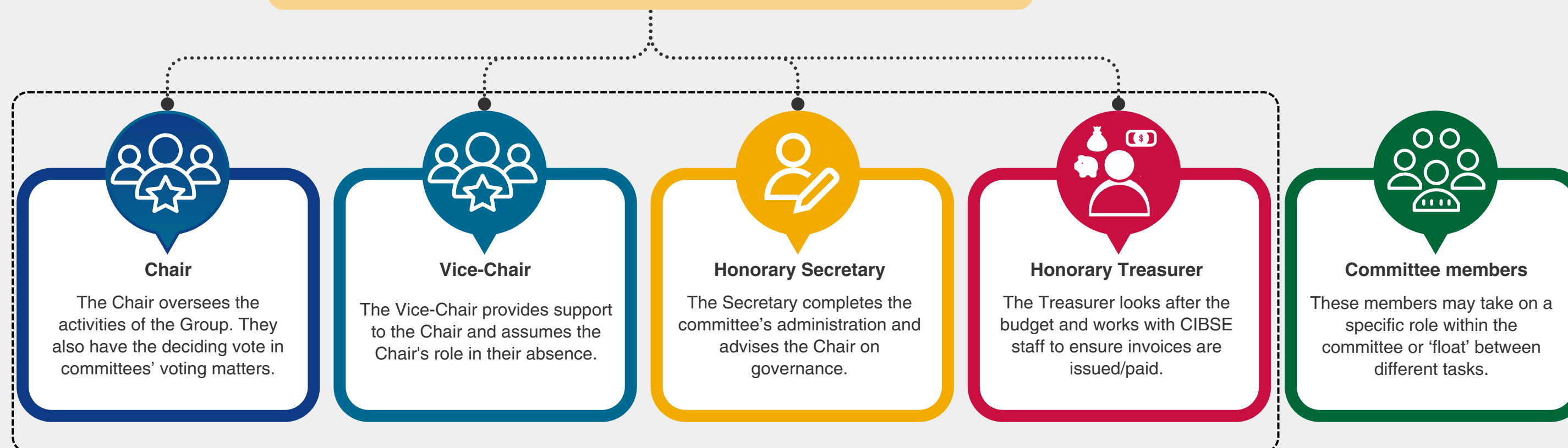
YEN members, Committee members and CIBSE members are all different, but they do overlap.



# Committee Members

## Officers

A collective noun for Chair, Vice-Chair, Secretary and Treasurer. These roles have specific duties as defined by CIBSE.







# Want to join the committee?

---

The committee plans the activities of the Young Engineers Network.

Email [yen@cibse.org](mailto:yen@cibse.org) to find out more.