

AMPCAPITAL 

# Going from great to good

## Dealing with the past

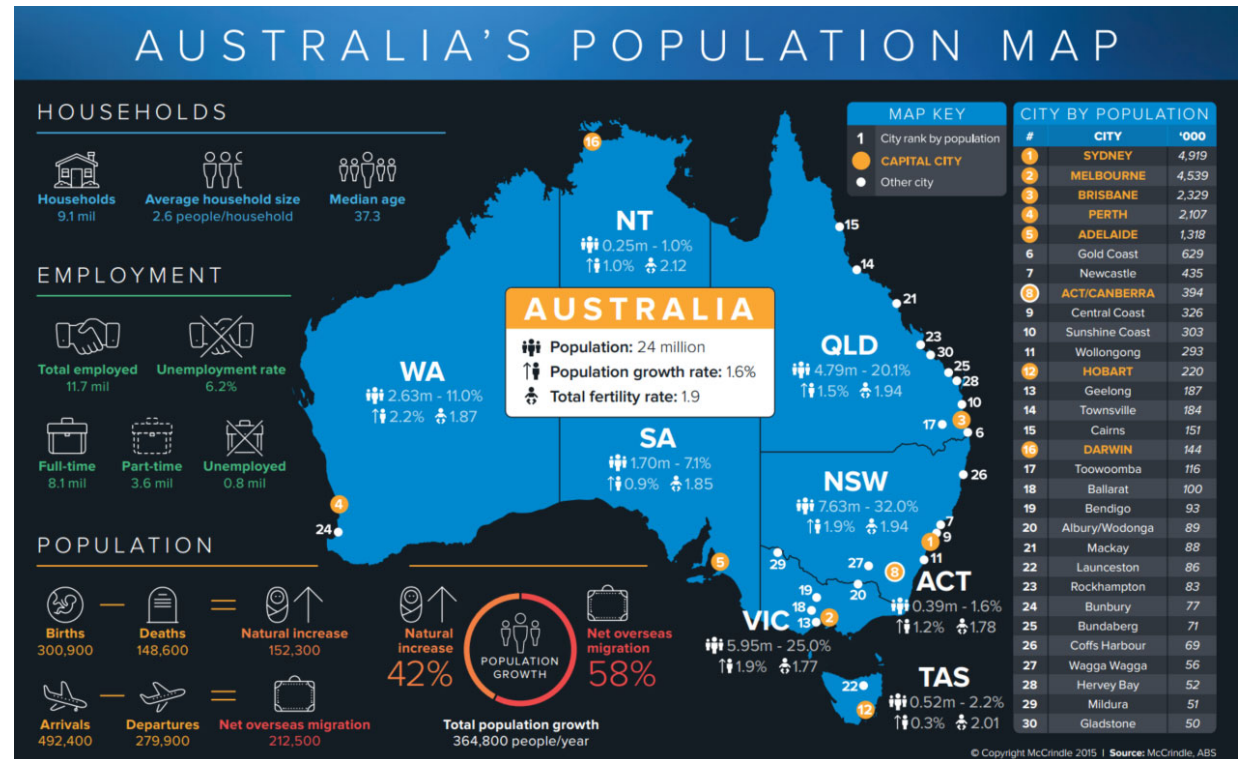
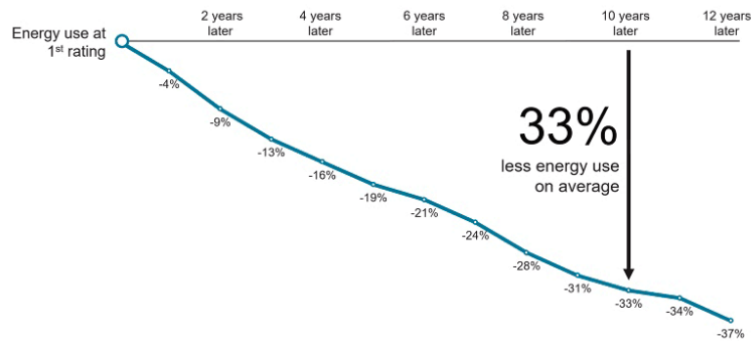
Erik Moore, AMP Capital

September 2022



# Building Demand

**NABERS-certified buildings reduce energy use at one of the fastest rates in the world**



1. [NABERS has officially moved to the UK! - The Fifth Estate](#)  
 2. [Australia's Population Map and Generational Profile Update - McCrindle](#)

# Embodied carbon

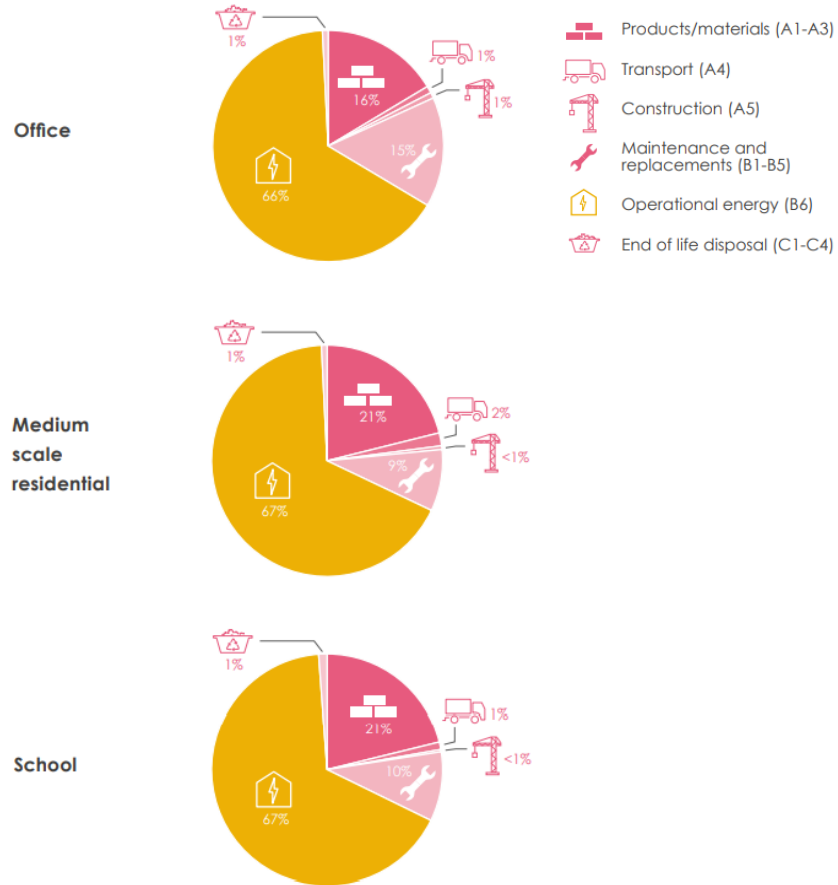
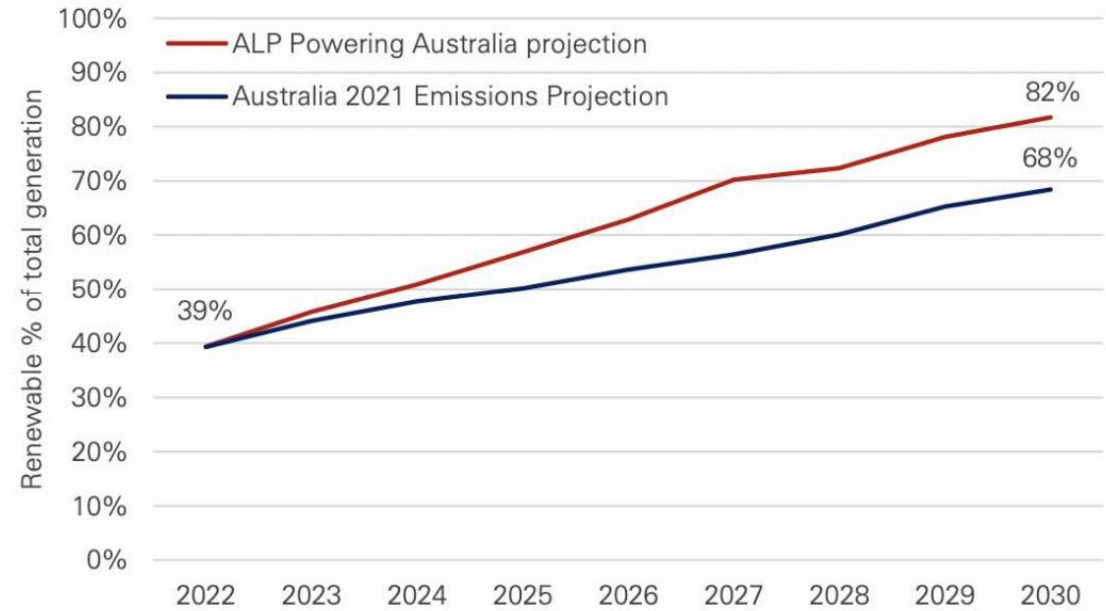
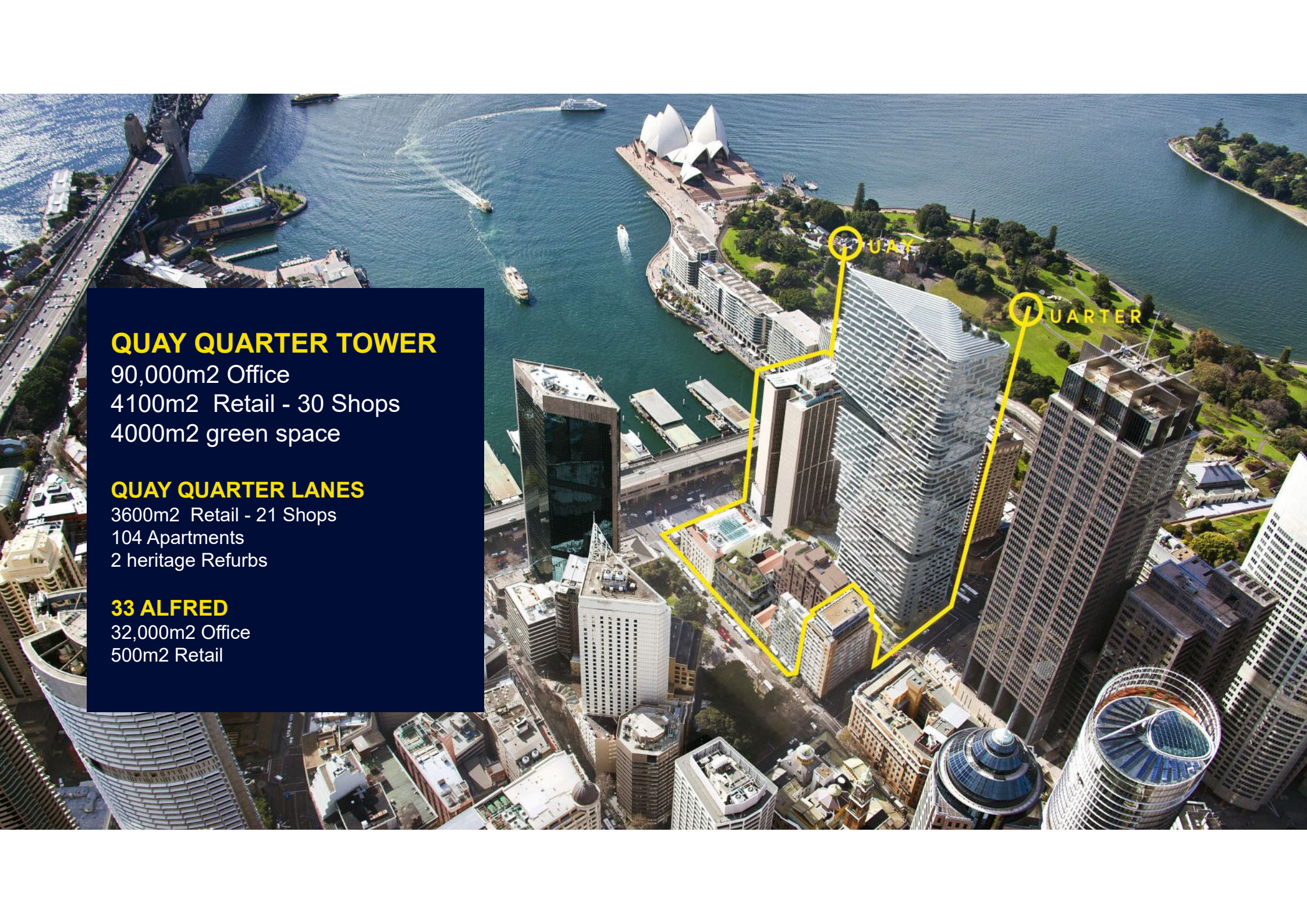


Figure 8: Forecast penetration of renewable energy in the NEM



1. [Embodied Carbon Primer | LETI](#)  
 2. [Look, no taxes! Labor's modest target assumes 82 pct renewables and 89 pct EVs by 2030 | RenewEconomy](#)





## **QUAY QUARTER TOWER**

90,000m<sup>2</sup> Office

4100m<sup>2</sup> Retail - 30 Shops

4000m<sup>2</sup> green space

## **QUAY QUARTER LANES**

3600m<sup>2</sup> Retail - 21 Shops

104 Apartments

2 heritage Refurbs

## **33 ALFRED**

32,000m<sup>2</sup> Office

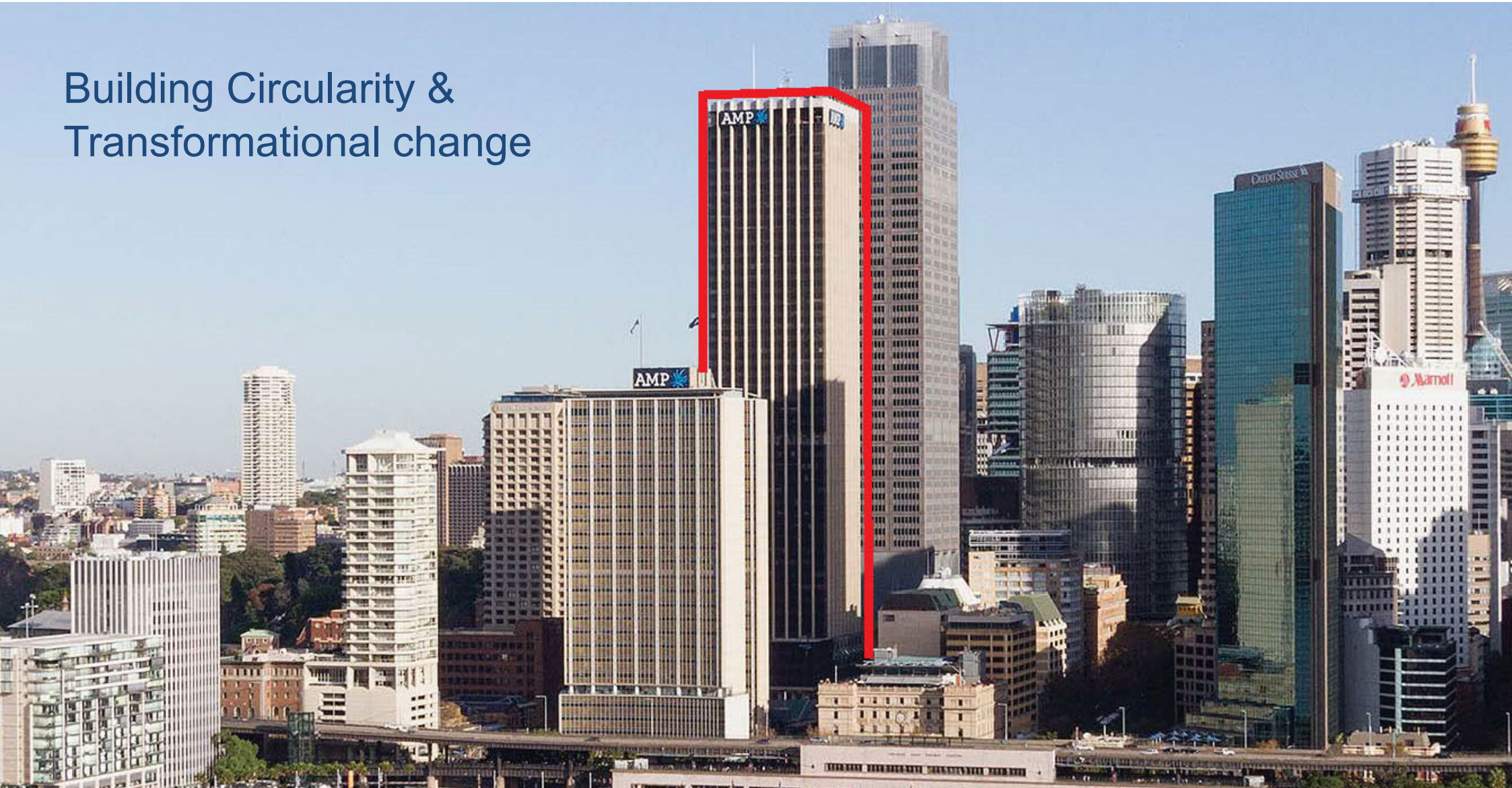
500m<sup>2</sup> Retail







# Building Circularity & Transformational change

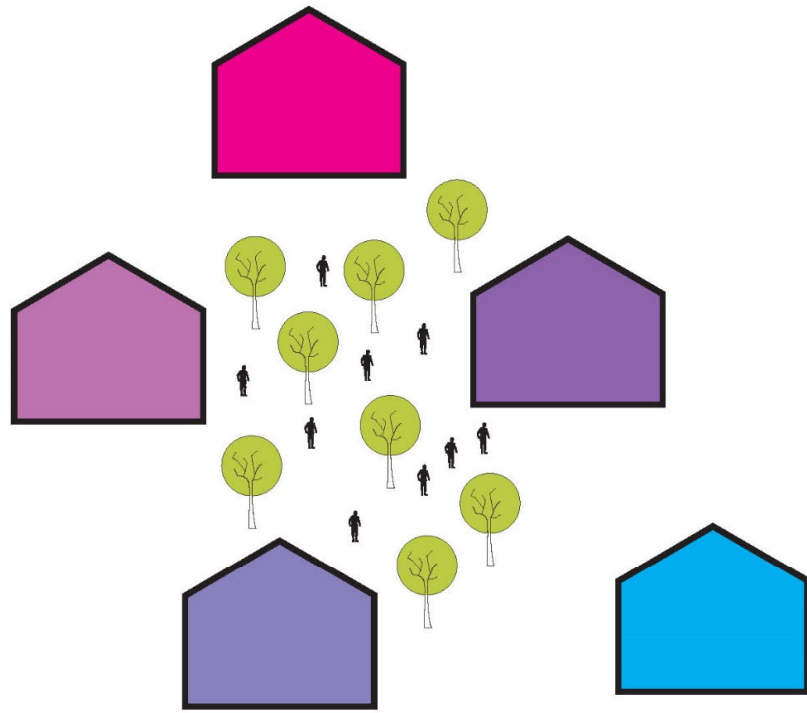




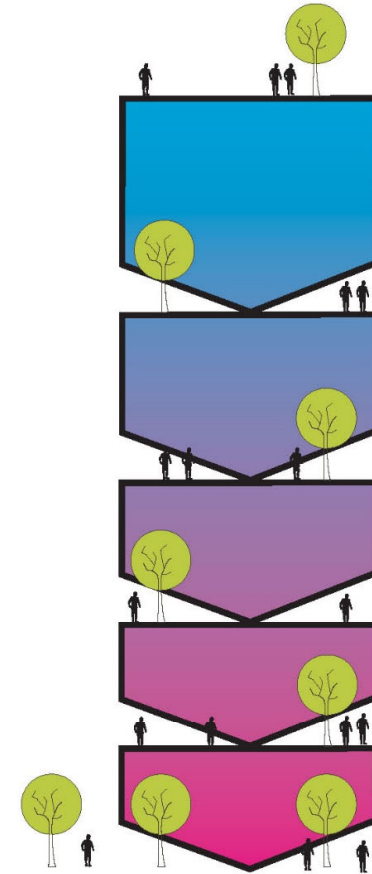
# Building Circularity & Transformational change



Artist's Impression

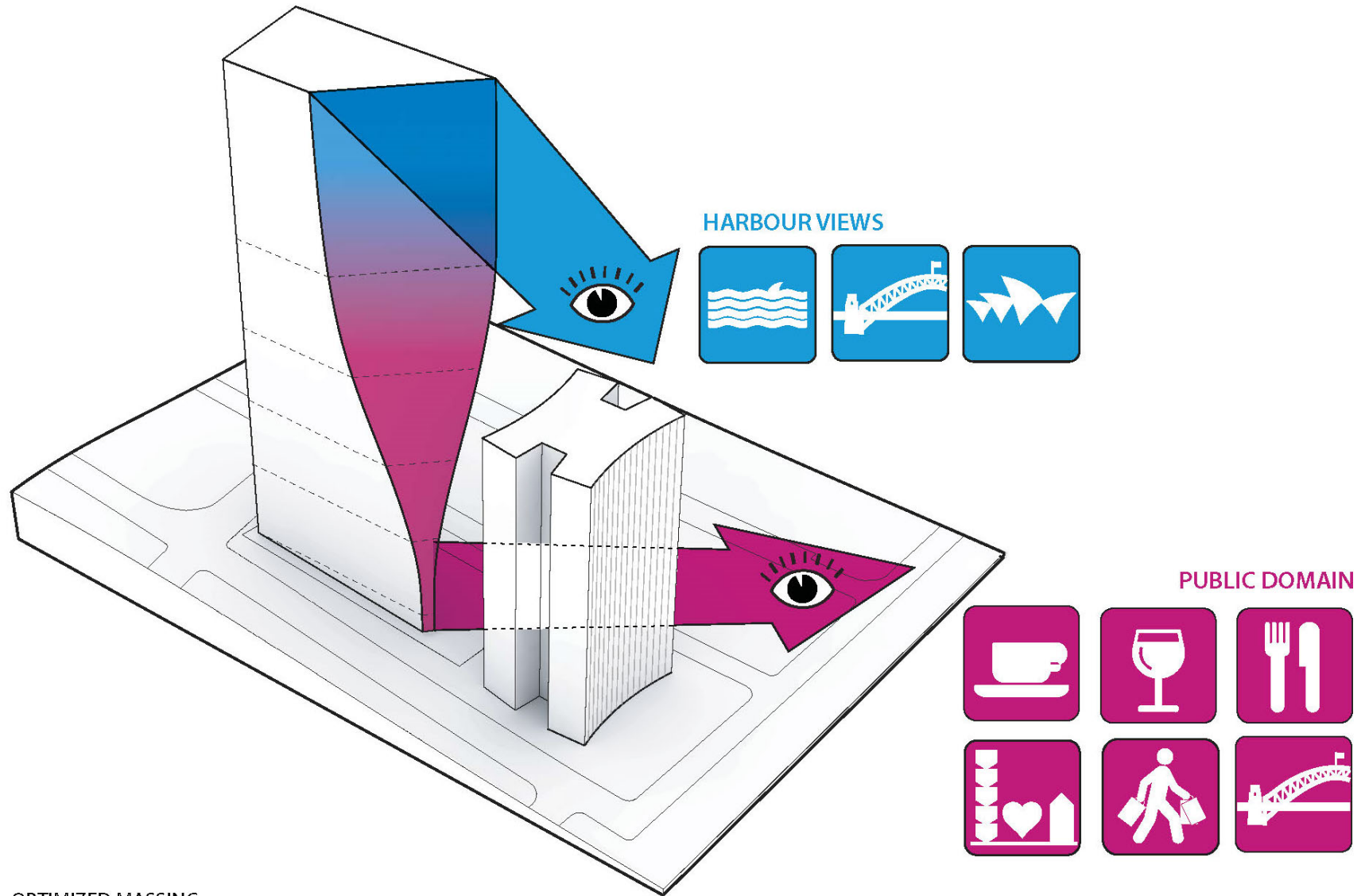


Horizontal Campus



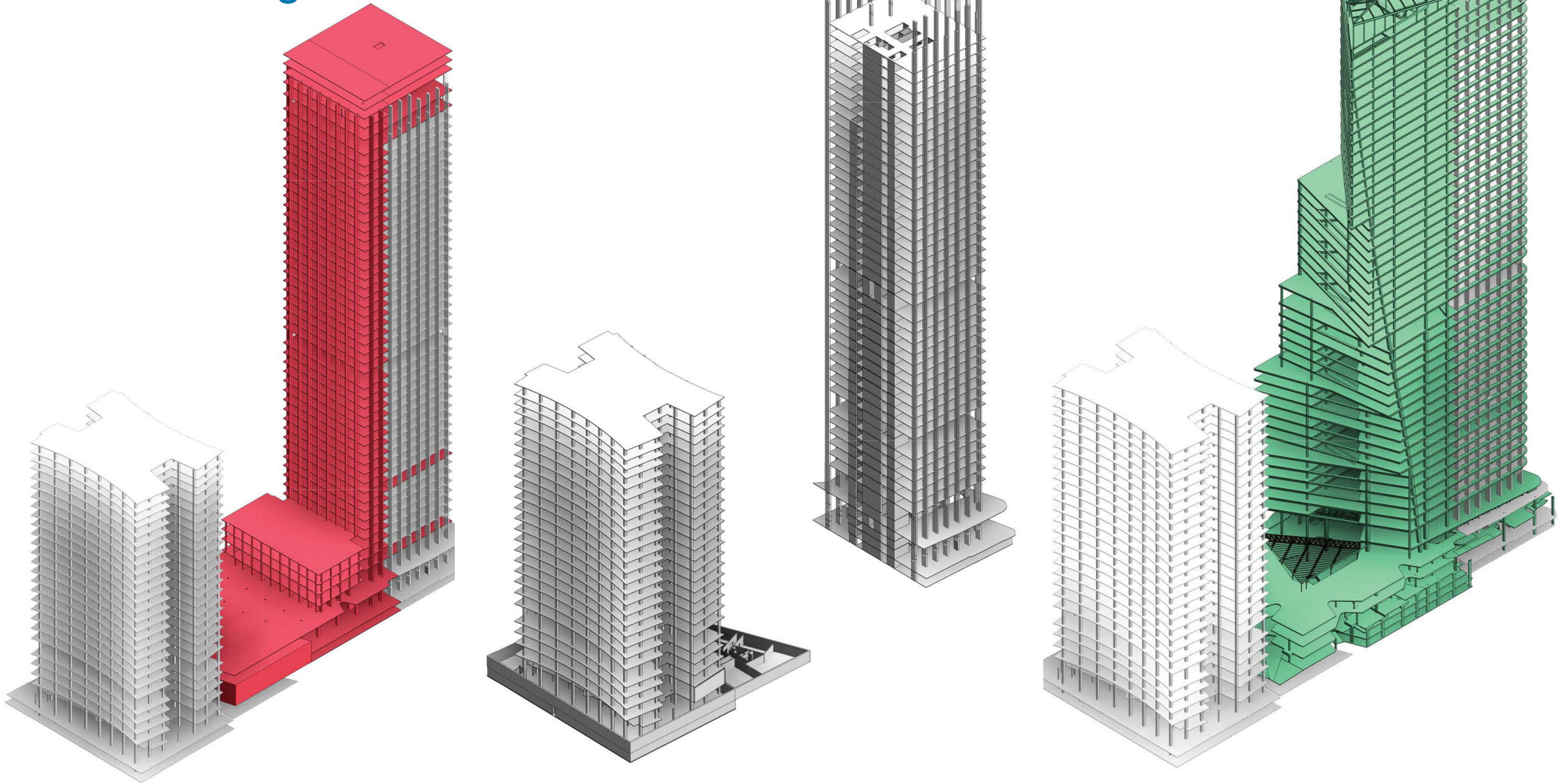
Vertical Village





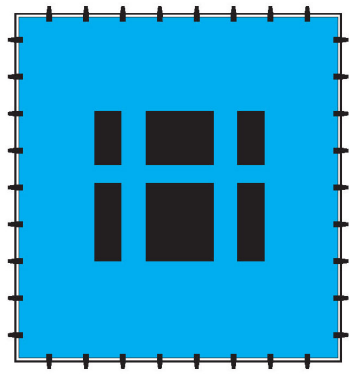
OPTIMIZED MASSING

# Transforming old to new

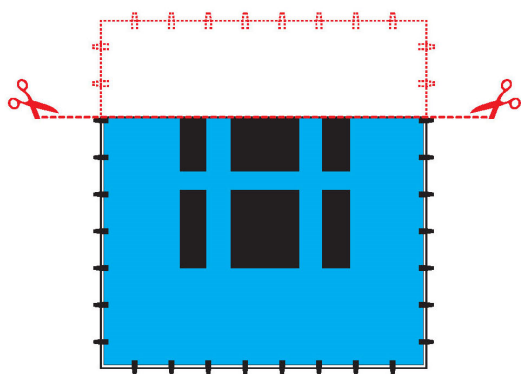




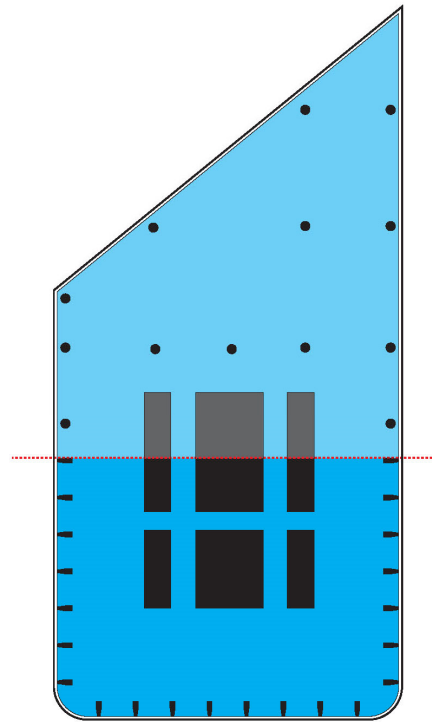
# Transforming old to new



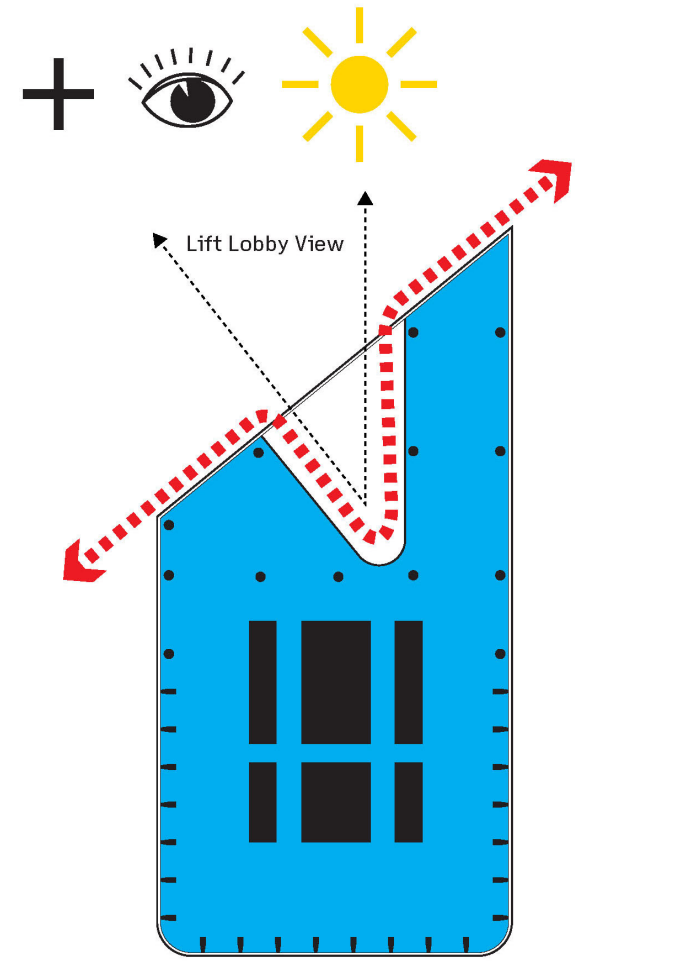
Existing



Remaining



Existing / New



Increased Views / Daylighting



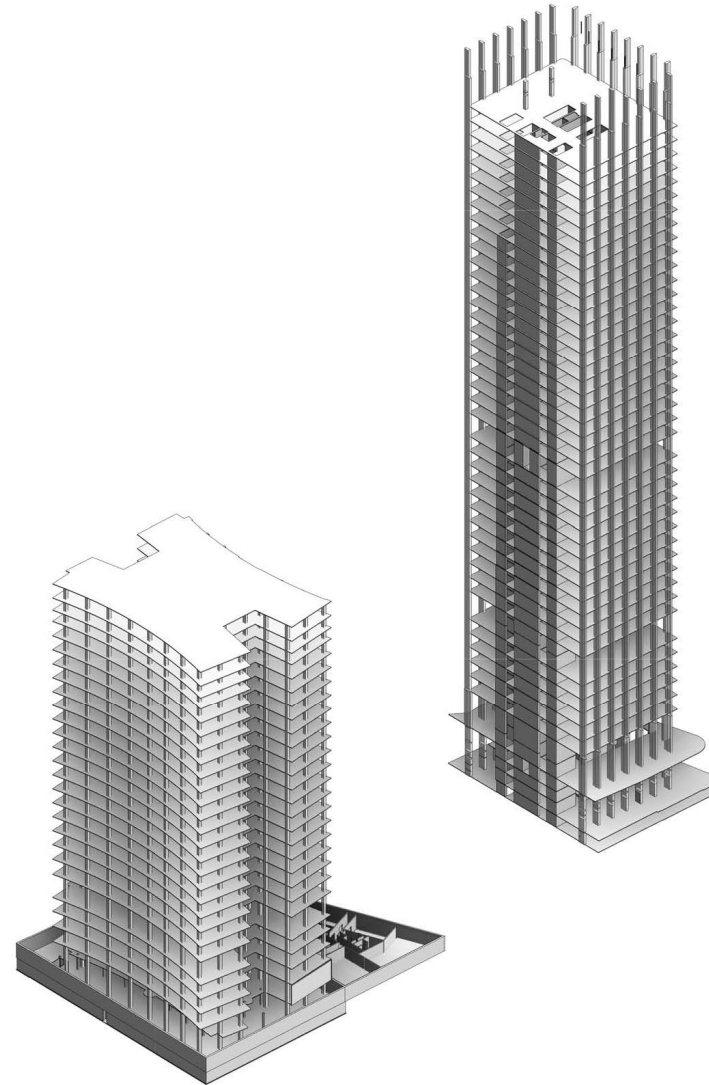


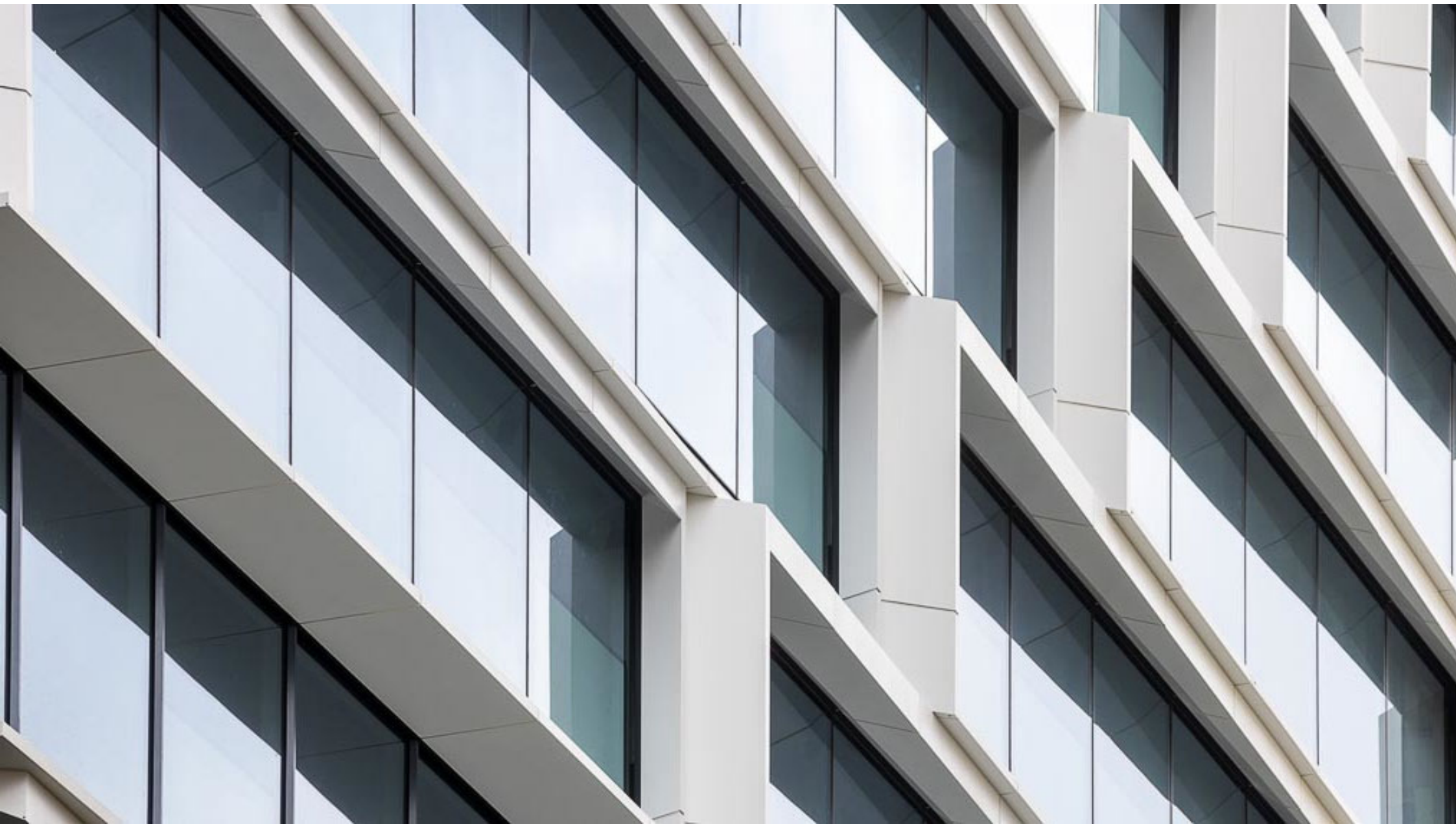
Retain the existing structure:

**12,000,000 kg CO<sub>2</sub>  
embodied carbon**

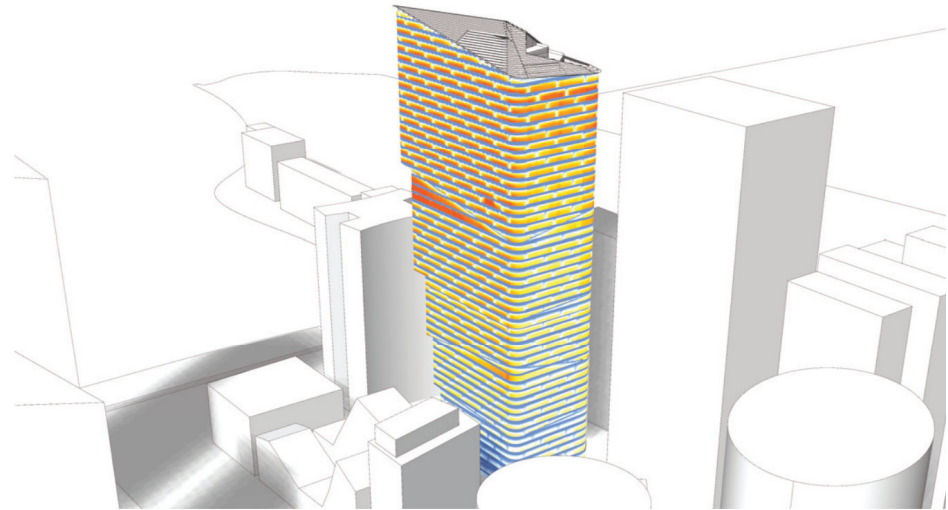
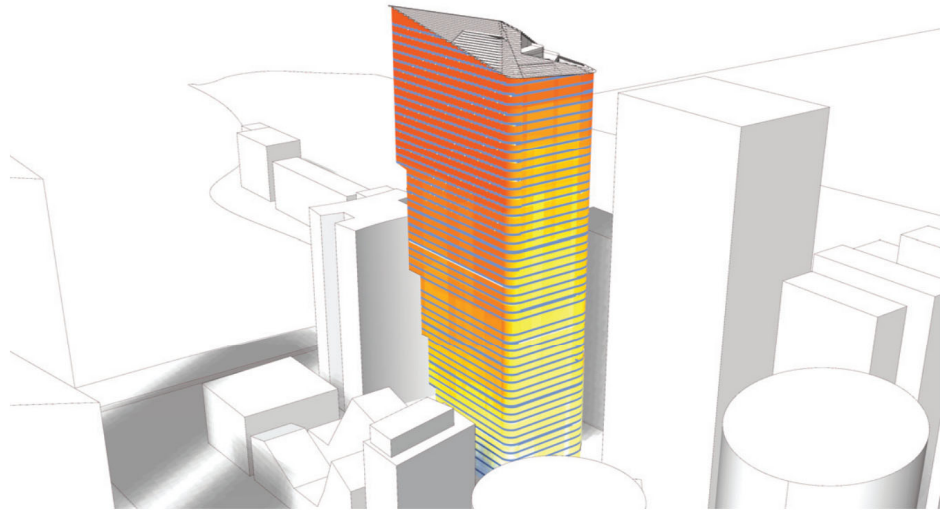
**5-8% carbon emissions saving over  
the life of the building**

**2-3 years  
operational carbon emissions**

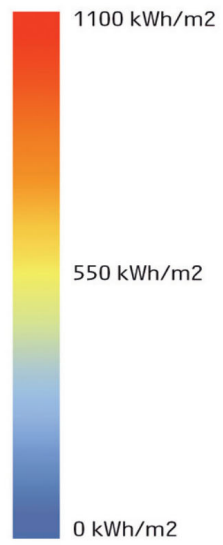
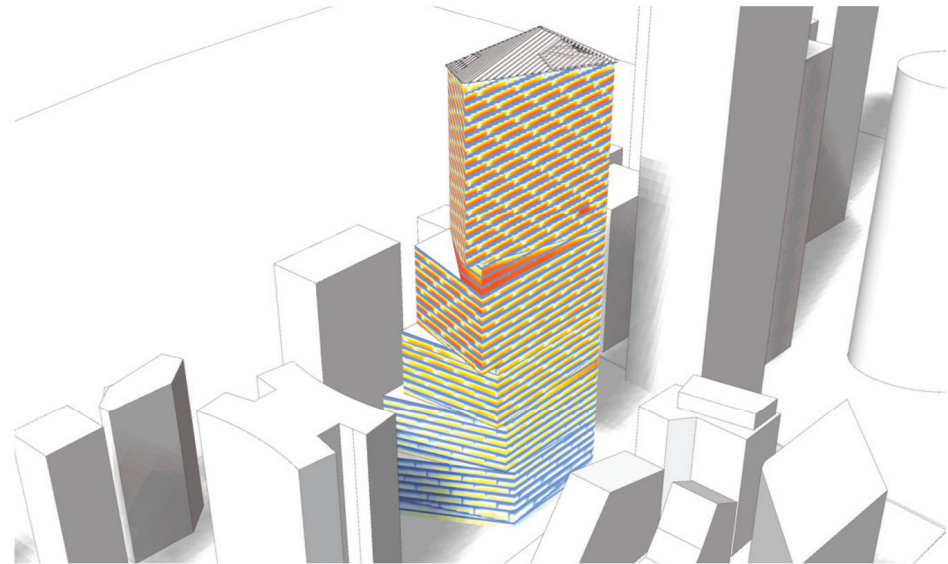
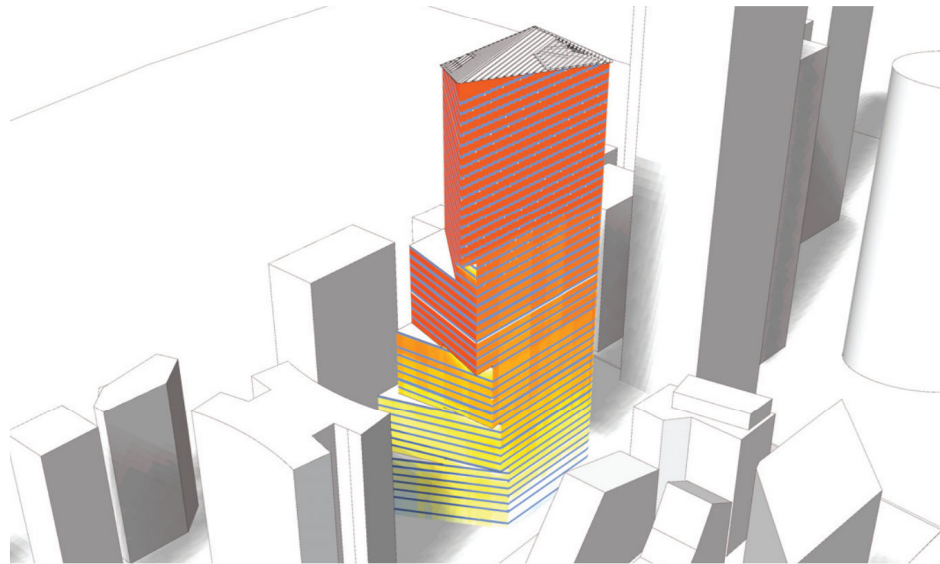








Total annual radiation  
Without frames:  
24.714 kWh  
With frames:  
17.205 kWh  
Reduction:  
30.4%  
annual radiation



Facade Solar Radiation Analysis - No Frame

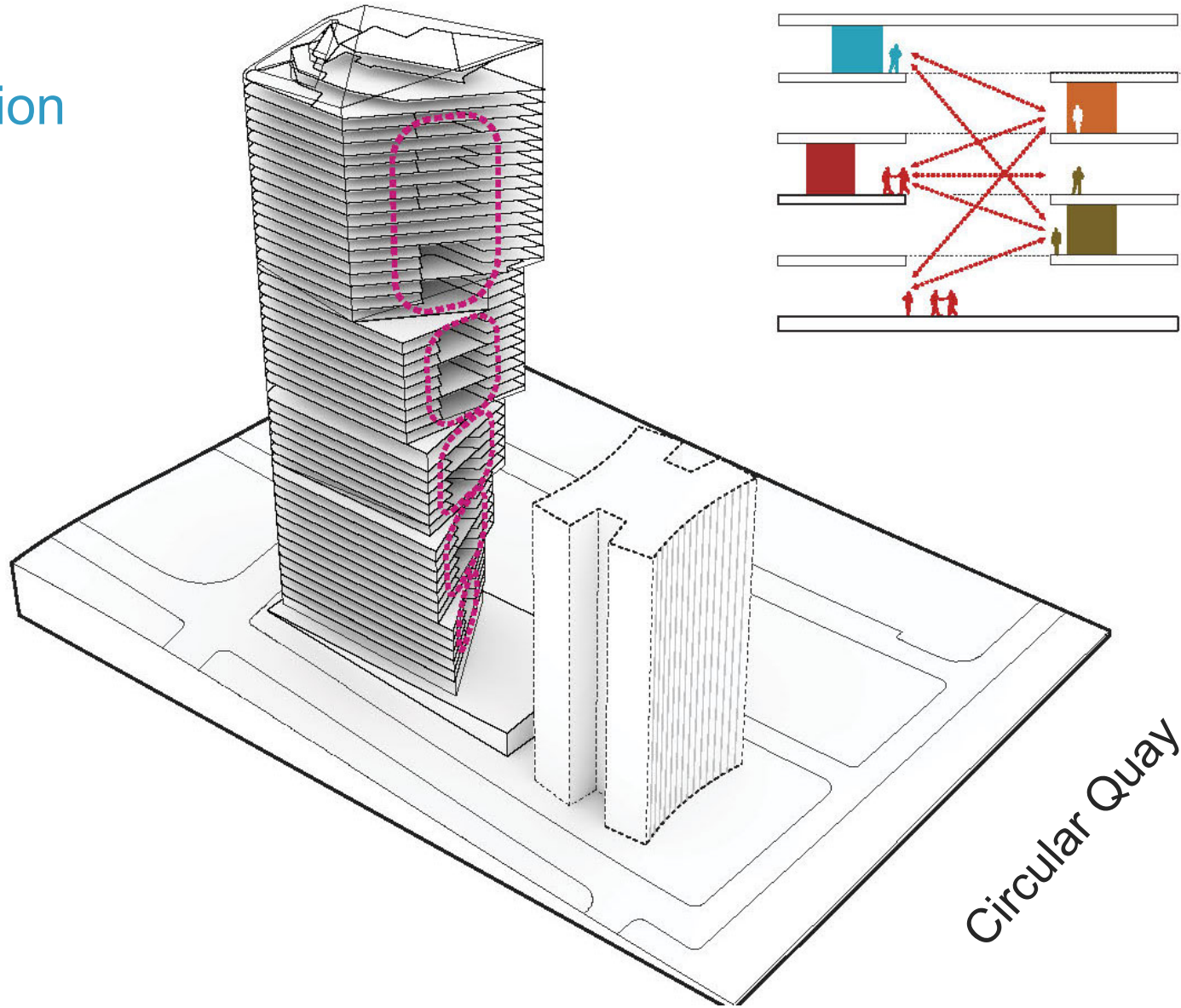
Facade Solar Radiation Analysis - Frame





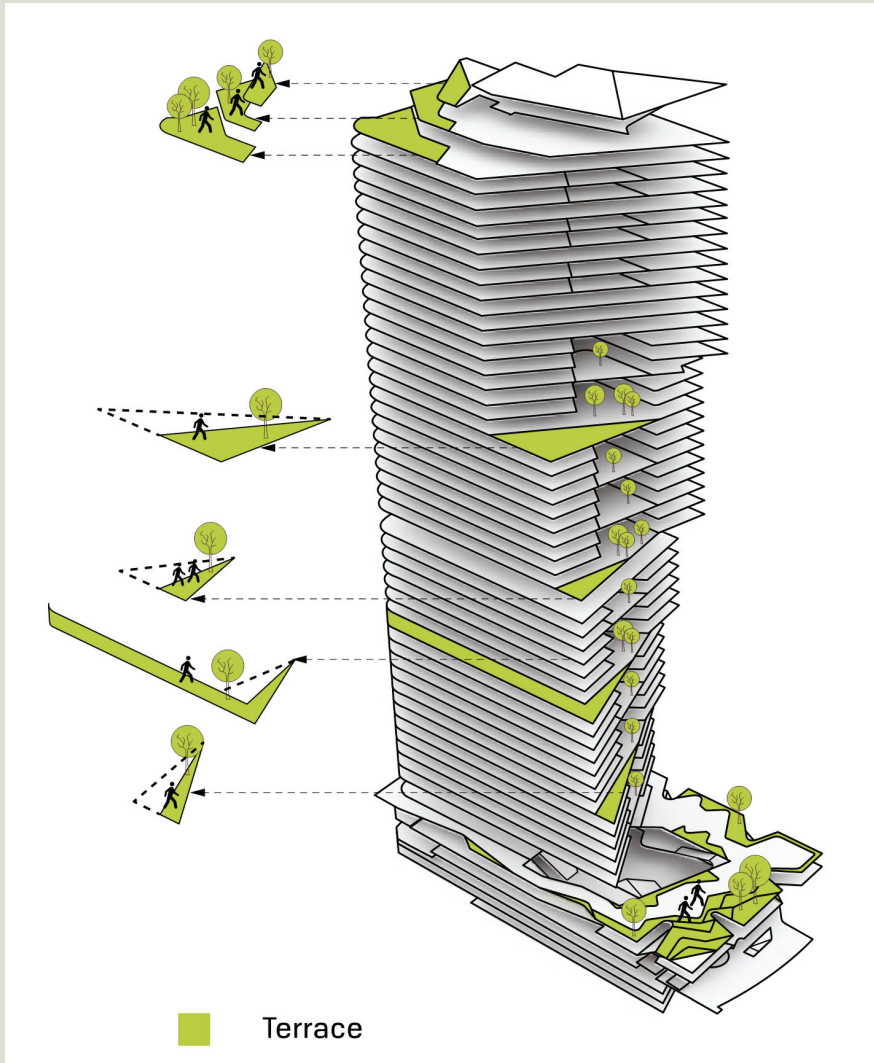


# Connection & collaboration





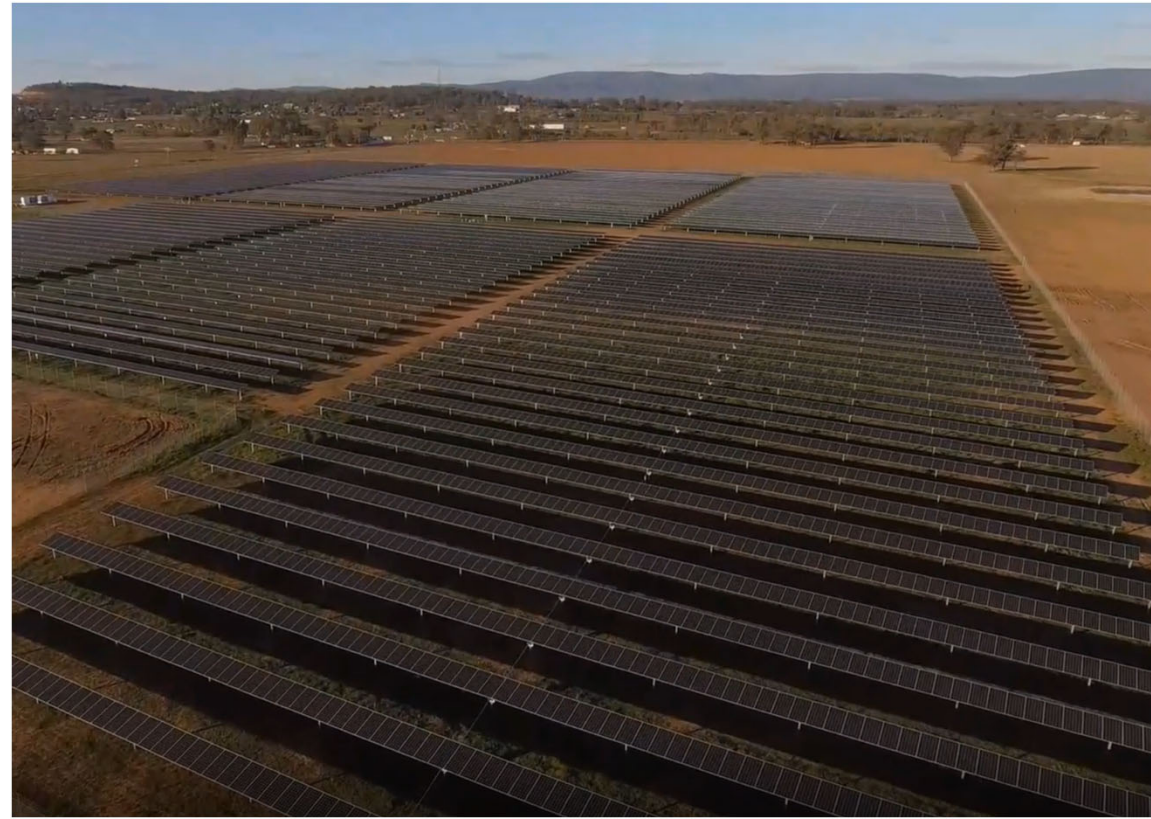








Trundle Solar Farm



Peak Hill Solar Farm





Thank you



[ampcapital.com](http://ampcapital.com)



## Important note

While every care has been taken in the preparation of this document, AMP Capital Investors Limited (ABN 59 001 777 591, AFSL 232497) makes no representation or warranty as to the accuracy or completeness of any statement in it including, without limitation, any forecasts. Past performance is not a reliable indicator of future performance. This document has been prepared for the purpose of providing general information, without taking account of any particular investor's objectives, financial situation or needs. An investor should, before making any investment decisions, consider the appropriateness of the information in this document, and seek professional advice, having regard to the investor's objectives, financial situation and needs.

This document is solely for the use of the party to whom it is provided and must not be provided to any other person or entity without the express written consent of AMP Capital.